

Professor
Miško
Čubrinovski

PhD

University of
Canterbury
Christchurch
New Zealand

20th Nonveiller Lecturer



Professor
Miško
Čubrinovski
PhD
University of
Canterbury
Christchurch
New Zealand

1958 born in Skopje, Macedonia
1963 M6.1 in Skopje

1982 B.Sc. in Civil Engineering, University Cirilus and Methodius, Skopje, Macedonia

1983-1989 Research Engineer, Institute of Earthquake Eng. and Eng. Seismology

1989 M.Sc. in Earthquake Engineering, Institute of Earthquake Engineering, Skopje, Macedonia (1989)

1989-1992 Assistant Professor, Institute of Earthquake Eng. and Eng. Seismology



Institute of Earthquake Engineering & Engineering Seismology

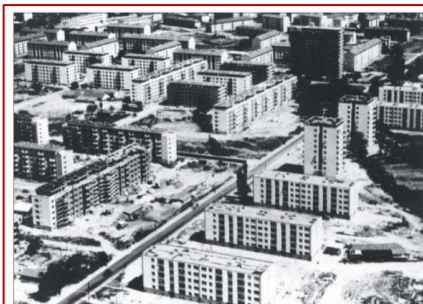
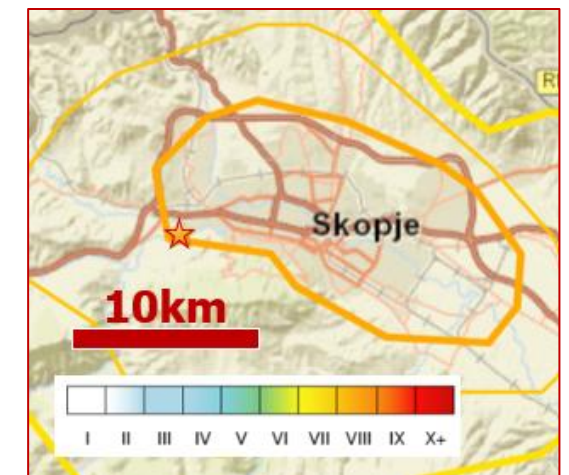


Fig. 2. General view to the five storey masonry buildings in the West Side of the city of Skopje, before earthquake



Fig. 6. Pancake failure of tobacco factory masonry building in central part of Skopje



Fig. 5. Failure of right side structural unit of five story apartment masonry building in the West side

Professor
Miško
Čubrinovski
PhD
University of
Canterbury
Christchurch
New Zealand

**1990-1993 Doctoral course at the
University of Tokyo**

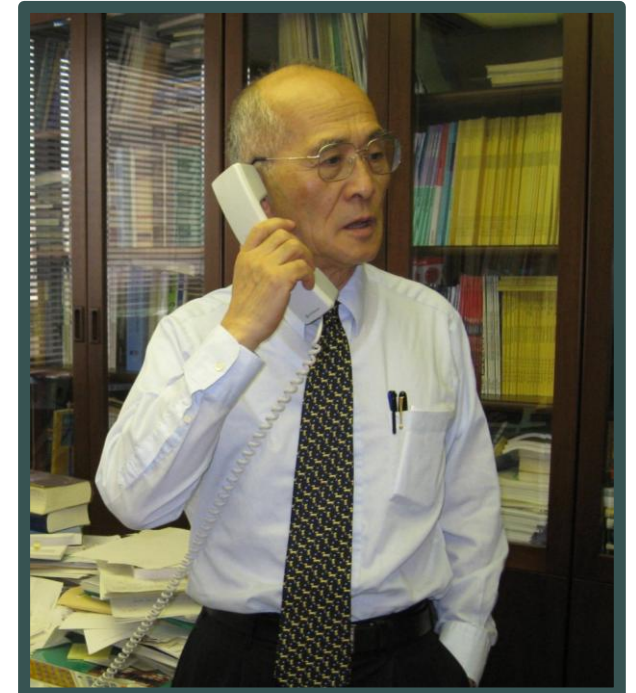


東京大学
THE UNIVERSITY OF TOKYO



Professor
Miško
Čubrinovski
PhD
University of
Canterbury
Christchurch
New Zealand

**1990-1993 Doctoral course at the
University of Tokyo
with Professor Kenji Ishihara**



Professor
Miško
Čubrinovski

PhD

University of
Canterbury
Christchurch
New Zealand

1993-1997 Research Engineer, Technology Research
Center, Taisei Corporation, Tokyo, Japan

1997-2005 Principal Researcher, Kiso-Jiban
Consultants, Tokyo, Japan

In close cooperation with Professor Ishihara



May 1998 POREČ
XI Danubean-European Conference on Soil Mechanics and Geotechnical Engineering



Professor
Miško
Čubrinovski

PhD
University of
Canterbury
Christchurch
New Zealand

2005-present University of Canterbury, Christchurch, New Zealand



Professor
**Miško
Čubrinovski**

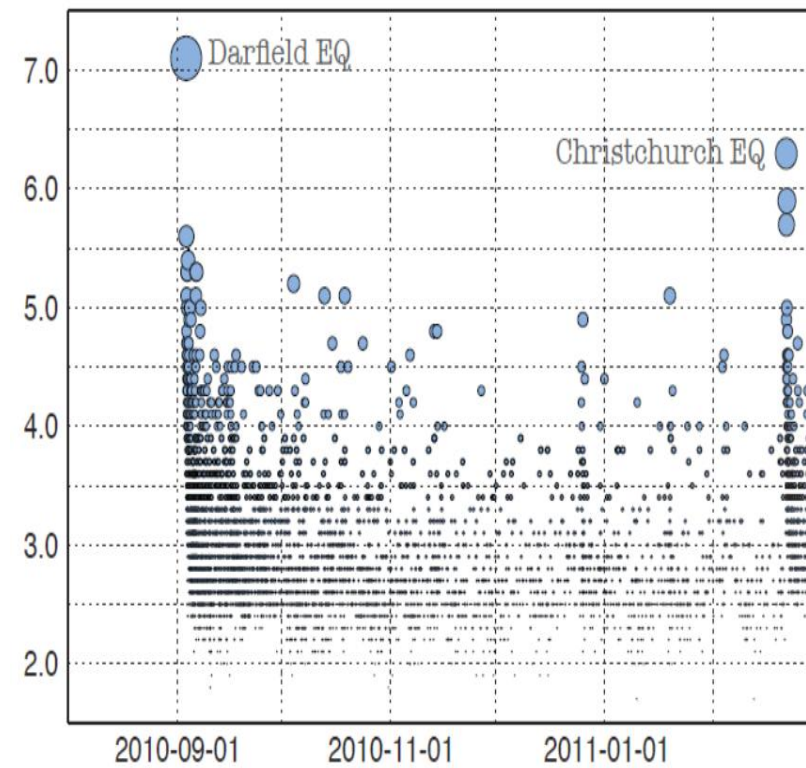
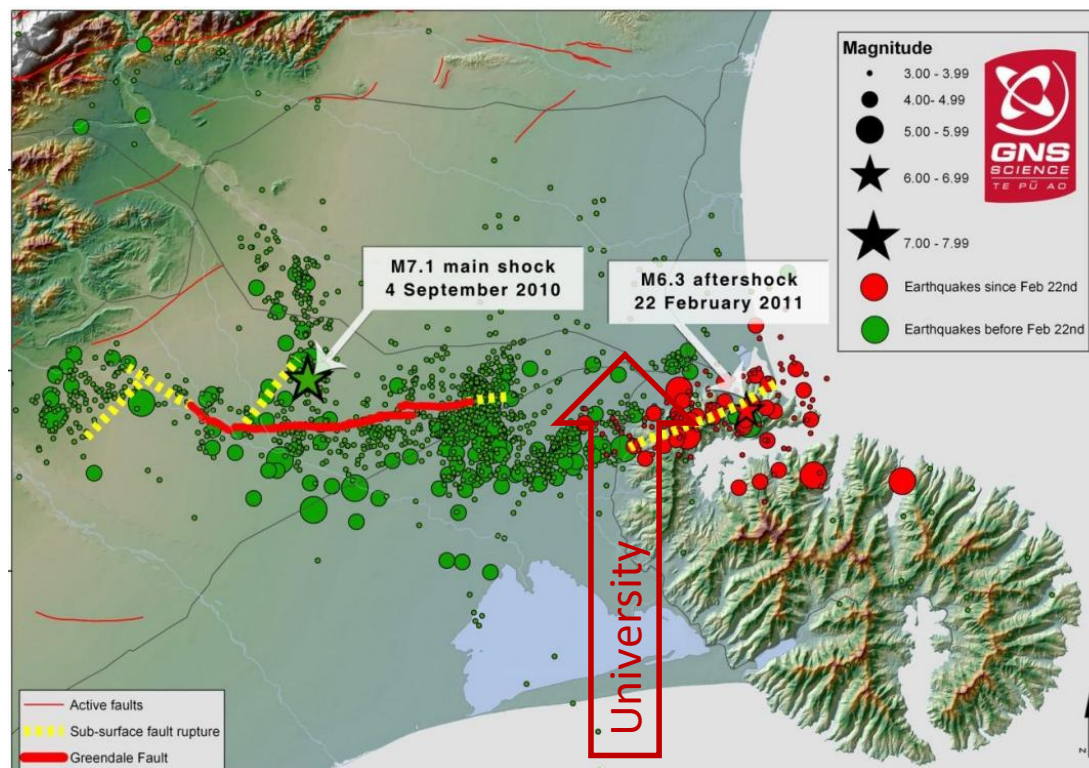
PhD
University of
Canterbury
Christchurch
New Zealand

2005-present University of Canterbury, Christchurch, New Zealand



04.09.2010. Darfield Earthquake M 7.1
22.02.2011. Christchurch Earthquake M 6.3

From
the
GEER
Report



Professor
Miško
Čubrinovski
PhD
University of
Canterbury
Christchurch
New Zealand

2015 Chair

**6th International Conference
on Earthquake Geotechnical Engineering
Christchurch, New Zealand, November 2015**

2019 – 2024 Chair

**Technical Committee on Geotechnical Earthquake Engineering (TC203),
International Society for Soil Mechanics and Geotechnical Engineering
(ISSMGE)**



**8th International Conference
on Earthquake Geotechnical Engineering
Osaka, Japan, May 2024**

**9th International Conference
on Earthquake Geotechnical Engineering
CROATIA May 2029**

Professor
Miško
Čubrinovski

PhD
University of
Canterbury
Christchurch
New Zealand

2005-present University of Canterbury, Christchurch, New Zealand

**2016-2021 Leadership Team Member and Flagship Programme Leader,
QuakeCoRE NZ Centre for Earthquake Resilience (Centre of Research
Excellence)**

**2010-present Faculty Member, ROSE School, Institute for Advanced Study,
ISUS, Pavia, Italy; International Programme for Postgraduate Studies in
Earthquake Engineering**



Professor
Miško
Čubrinovski

PhD
University of
Canterbury
Christchurch
New Zealand

Research supervision

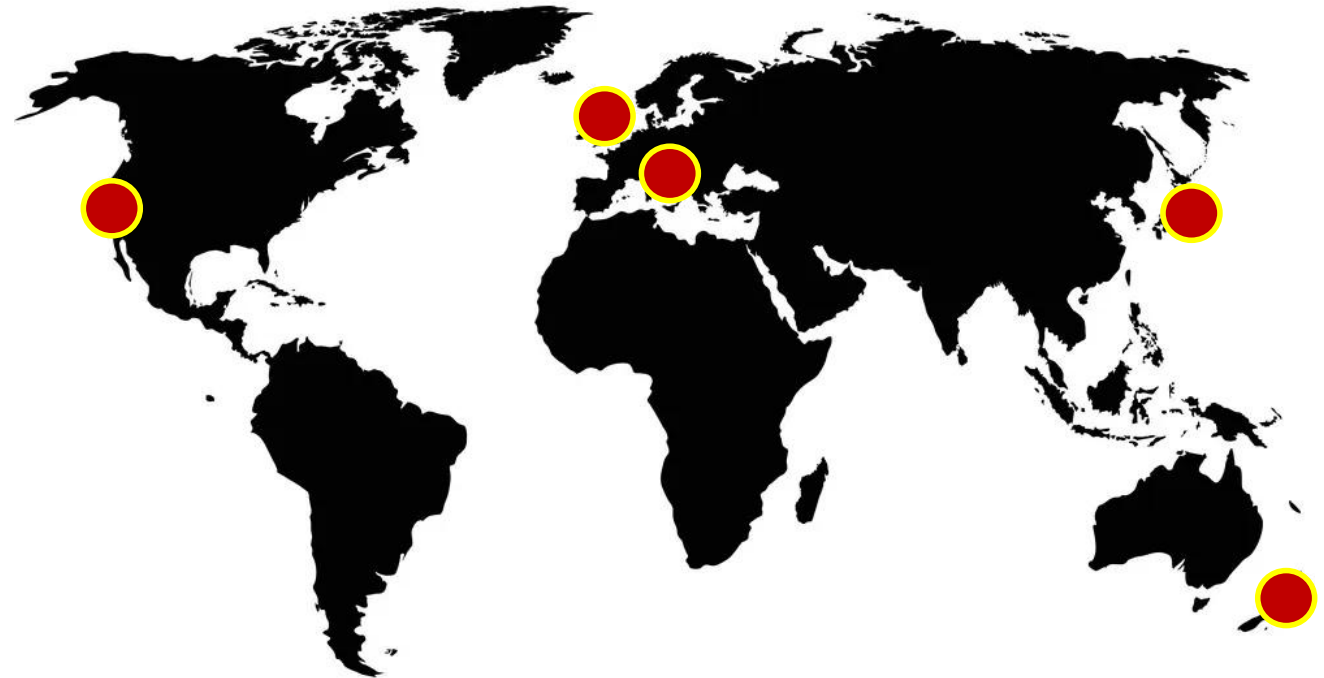
University of Canterbury (New Zealand)

Institute for Advanced Study (IUSS), Pavia (Italy)

University of California, Berkeley (USA)

University of Cambridge (UK)

Science University of Tokyo (Japan)



Professor
Miško
Čubrinovski

PhD
University of
Canterbury
Christchurch
New Zealand

University courses taught

University of Canterbury (2005 – present)

ENCN452 – Advanced Geotechnical Engineering

ENCN454 - Earthquake Geotechnical Engineering

ENEQ620 – Advanced Earthquake Geotechnical Engineering

ENCI675 – Special Topic: Soil Liquefaction

ENCI675 – Special Topic: Seismic Performance of Geosynthetic-Reinforced Soil Structures

ENCI252 – Soil Mechanics

ENCI353 – Geotechnical Engineering

ROSE School, Pavia, Italy

Geotechnical Earthquake Engineering (2012; 2014; 2017)



Professor
Miško
Čubrinovski

PhD
University of
Canterbury
Christchurch
New Zealand



Professional service

Seismic Risk Working Group Member – VM1 Project (Stage 3), MBIE and Engineering New Zealand (ENZ), 2024-2026
Seismic Risk Working Group Member – VM1 Project (Stage 2), MBIE and Engineering New Zealand (ENZ), 2023-2024
Seismic Risk Working Group Member – VM1 Project (Stage 1), MBIE and Engineering New Zealand (ENZ), 2021-2023
Seismic Risk Working Group Member – Rethinking seismic risk in the building control system (options for change), MBIE and Engineering New Zealand (ENZ), 2020
Advisory Board Member, Next Generation Liquefaction (NGL Project), USA, 2019 - 2023
<https://nextgenerationliquefaction.org/about/index.html>
Flagship Programme Leader, QuakeCoRE NZ Centre for Earthquake Resilience, 2016 - 2021
Editorial Panel Member, MBIE-NZGS Guidelines for Earthquake Geotechnical Engineering Practice in NZ, 2014-2021
Editorial Board Member, Bulletin of the New Zealand Society for Earthquake Engineering, 2013 – present
Advisory Group, LIQUEFACT project, European Consortium, European Commission, 2016 - 2019
Associate Editor, Soil Dynamics and Earthquake Engineering, 2016 – 2019
Steering Committee, 7ICEGE, 7th International Conf. on Geotechnical Earthquake Engineering, Rome, 17-20 June 2019
Expert Member, Technical and Community Advisory Group, Regenerate Christchurch, Regeneration Plan for the Ōtākaro/Avon River Corridor (former Residential Red Zone), 2017 – 2018
Panel Discussion Member, 2017 NZSEE Conference, Wellington, 2017
Panel Discussion Member, 2nd Workshop on Geotechnical Earthquake Engineering “Dealing with the Consequences of Liquefaction”, University of California, San Diego, March 2017.
Co-Chair, U.S.–New Zealand–Japan International Workshop, Liquefaction-Induced Ground Movements Effects, University of California, Berkeley, California, 2–4 November 2016
Editor, Special Issue of Soil Dynamics and Earthquake Engineering, 2016
Chair, 6ICEGE, 6th International Conf. on Geotechnical Earthquake Engineering, Christchurch, 1-4 November 2015
Editor, Special Issue of Earthquake Spectra, 2014
Panel Discussion Member, 9th Int. Symposium Water Supply Technology, Yokohama, Japan, November 2012
International Advisory Committee Member, 2nd Int. Conf. on Performance-Based Design in Earthquake Geotechnical Engineering (PBD-III), 16-19 July 2017, Taormina, Italy, May 2012
International Advisory Committee Member, Symposium “One Year after the 2011 Great East Japan Earthquake”, JSCE, Tokyo, Japan, March 2012

Professor
Miško
Čubrinovski
PhD
University of
Canterbury
Christchurch
New Zealand



Professional service

Canterbury Earthquake Royal Commission: Expert witness at inquiries of the Canterbury Earthquakes Royal Commission, October 2011
Scientific Committee, 5ICEGE, 5th International Conference on Earthquake Geotechnical Engineering (5 ICEGE), Santiago, Chile, January 2011
Scientific Committee, 14th European Earthquake Engineering Conference, Ohrid, Macedonia, 30 Aug. - 3 Sept. 2010
International Advisory Committee Member, Bangladesh Geotechnical Conference 2010, Dhaka, Bangladesh, 3-4 November 2010
Editorial Board Member, Soil Dynamics and Earthquake Engineering, 2009 –
Editor, Special Issue of Bulletin of the New Zealand Society for Earthquake Engineering, 2009
Member, Theme Leadership Group, Natural Hazards Research Platform (NHRP), New Zealand, 2009
International Advisory Committee, TC4 Earthquake Geotechnical Engineering Satellite Conference, 17th International Conference on Soil Mechanics & Geotechnical Engineering, Alexandria, Egypt, October 2009
Steering Committee Member, Earthquake Engineering Research Forum, New Zealand Society for Earthquake Engineering, 2009
International Advisory Committee, IS-Tokyo 2009 International Conference on Performance-Based Geotechnical Earthquake Engineering, Tokyo, June 2009
International Advisory Committee, Geo-informatics and Zoning for Hazard Mapping Conference, Kyoto, Japan, December 2009
Organizing Committee, International Workshop on Soil-Foundation-Structure Interaction (SFSI), Auckland, New Zealand, 26-27 November 2009
Organizing Committee: ICEGE Workshop 4, Thessaloniki, Greece, 27 June 2007
Core Member of E-Defence, Soils and Foundations Research Committee, Japan (2006-2007)
Chair, NZ Geotechnical Earthquake Engineering Workshop, Christchurch, 21-23 November 2006
Editorial Board Member, Tsuchi-to-Kiso, Japanese Edition of Soils and Foundations Journal (2004-2005)
Member of Tokyo Metropolitan Highway Corp. and Highway Corp. of Japan Consortia (2003-2005)
Core-member of the DaiDaiToku and E-Defense Research Projects (2002-2005)
Member of Sakhalin to Japan Gas Pipeline Consortium (2001-2003)
Editor of Tsuchi-to-Kiso, Japanese Edition of Soils and Foundations Journal: Vol.49, No.11, 2001
Editor of Tsuchi-to-Kiso, Japanese Edition of Soils and Foundations Journal: Vol.50, No.11, 2002
Editor of Tsuchi-to-Kiso, Japanese Edition of Soils and Foundations Journal: Vol.51, No.11 2003

Professor
Miško
Čubrinovski
PhD
University of
Canterbury
Christchurch
New Zealand



Professional service

Member of the Advisory Committee for preparation of International Standard for Geotechnical Investigation and Testing within the European Committee for Standardization - 2002-2004

Member of High-Pressure Gas Safety Institute of Japan Consortium (2000-2003)

Member of Electric Power Civil Engineering Association of Japan research collaboration (1999-2000)

Panel Discussion Member, 11th Danube European Conf. on SMGE, Porec, Croatia, May 1998

Session Chair/Moderator (numerous international conferences and workshops – INCOMPLETE LIST): 8ICEGE, Osaka, Japan, 7-10 May 2024; PBD-IV, Beijing, July 2022; GEE Webinar series, IIT Roorkee, India, December 2021; 17th WCEE, Sendai, Japan, 7-12 September 2021; 7ICEGE, Rome, Italy, June 2019; 2019 ANZ Conference, Perth, Australia, 1-3 April 2019; Int. Workshop on Liquefaction, Auckland, 2-3 December 2013; 2nd Int. Conf. on Performance-Based Design in Earthquake Geotechnical Engineering PBD(II), Taormina, Italy, May 2012; 5 ICEGE, Santiago, Chile, January, 2011; Engineering; 9th Pacific Conference on Earthquake Engineering, April, Auckland 2011; 14th European Earthquake Conference, Ohrid, Macedonia, September, 2010; Bangladesh Geotechnical Conference 2010: Natural Hazards and Countermeasures in Geotechnical Engineering, Dhaka, November 2010; 17th ICSMGE - Satellite EGE Conference, Alexandria, Egypt, October 2009; 4th Int. Conf. on Urban Earthquake Engineering, Tokyo, March 2007; ICEGE Workshop 4, Thessaloniki, Greece, June 2007; International Workshop on Performance of Pile Foundations, University of California Davis, USA, 16-18 March 2005; U.S.-Japan Seminar on Seismic Disaster Mitigation in Urban Area, Anchorage, Alaska, USA, 26-27 June 2002.

Session Chair/Moderator (numerous national conferences and workshops - INCOMPLETE LIST): NZGS Conference, Dunedin March 2021; 2017 NZSEE Conference; 2013 NZSEE Conference; SFSI Workshop, Auckland, New Zealand, November 2009; NZSEE Conference, Christchurch, March 2009; NZGS Geotechnical Symposium 2008, NZGS, Auckland, September 2008; NZGEE Workshop, Christchurch, November 2006; 19th Int. Conf. ACMSM, Christchurch, New Zealand, 2006; also numerous clearing house meetings, workshops and events related to the 2010-2011 Canterbury Earthquakes.

Professor
Miško
Čubrinovski
PhD
University of
Canterbury
Christchurch
New Zealand

Journal papers 125+
Conference papers 240+
Technical reports 80+

Hundreds of coworkers
And many friends all over the world



Professor Miško Čubrinovski has been working
On assessment of seismic influences on structures, including NE Prevlaka
On developing computing models for soil behaviour prediction
On laboratory and in situ investigations
On model testing up to scale 1:1
On damage recognition after earthquakes
On finding solutions for remediations
On standards development and instructions

Professor
**Miško
Čubrinovski**

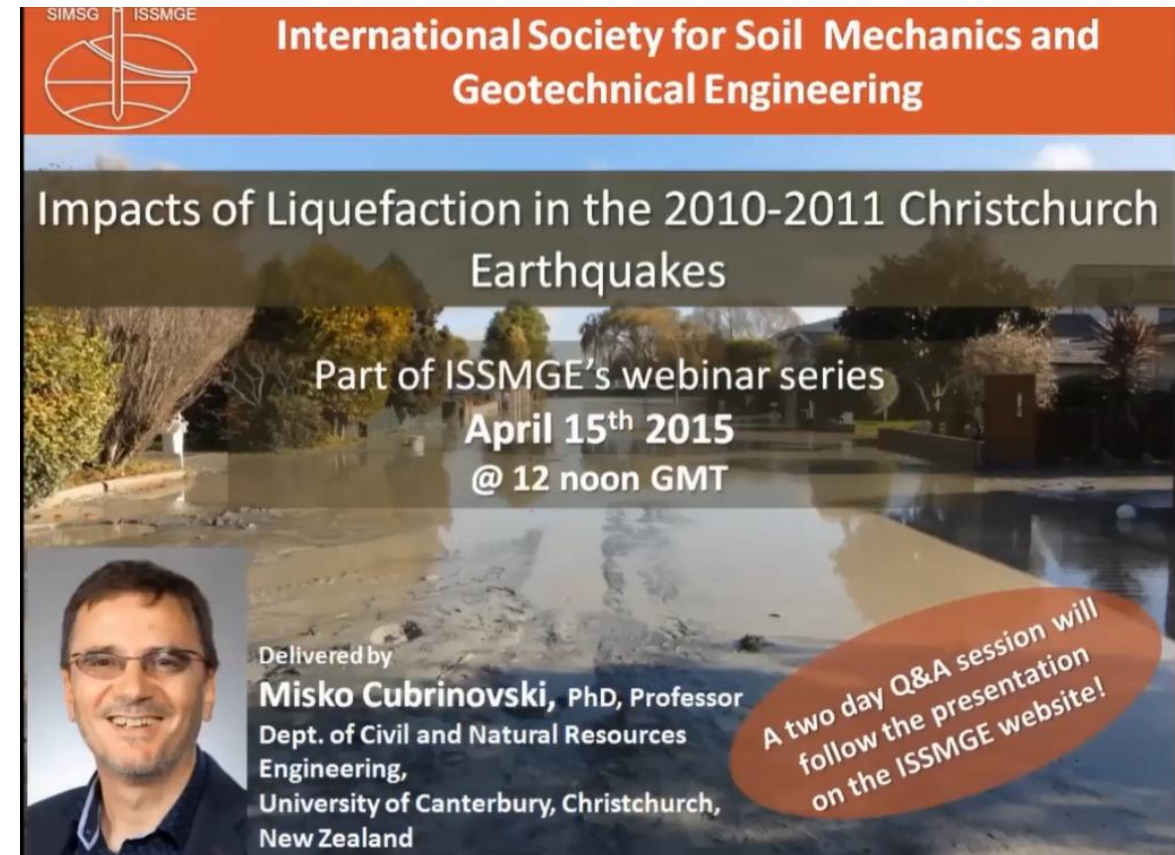
PhD
University of
Canterbury
Christchurch
New Zealand

Much over 100 keynote and invited lecture presentations

ISSMGE Virtual
Impacts of Liquefaction in the
2010-2011 Christchurch
Earthquakes

23-06-2017

<https://www.issmge.org/education/recorded-webinars/impacts-of-liquefaction-in-the-2010-2011-christchurch-earthquakes>



The image is a promotional graphic for a webinar. At the top, there is an orange banner with the ISSMGE logo (a globe with a vertical line) and the text "International Society for Soil Mechanics and Geotechnical Engineering". Below this, the title "Impacts of Liquefaction in the 2010-2011 Christchurch Earthquakes" is displayed in white text over a background image of a flooded residential area. The text "Part of ISSMGE's webinar series" is also present. The date and time, "April 15th 2015 @ 12 noon GMT", are shown in white. In the bottom left corner, there is a small portrait of Misko Cubrinovski. To the right of the portrait, his name and title are listed: "Delivered by Misko Cubrinovski, PhD, Professor Dept. of Civil and Natural Resources Engineering, University of Canterbury, Christchurch, New Zealand". In the bottom right corner, there is a red oval containing the text "A two day Q&A session will follow the presentation on the ISSMGE website!".

International Society for Soil Mechanics and Geotechnical Engineering

Impacts of Liquefaction in the 2010-2011 Christchurch Earthquakes

Part of ISSMGE's webinar series
April 15th 2015
@ 12 noon GMT

Delivered by
Misko Cubrinovski, PhD, Professor
Dept. of Civil and Natural Resources
Engineering,
University of Canterbury, Christchurch,
New Zealand

A two day Q&A session will follow the presentation on the ISSMGE website!

Professor
Miško
Čubrinovski
PhD
University of
Canterbury
Christchurch
New Zealand

Much over 100 keynote and invited lecture presentations

Ralph B. Peck Medal Lecture

Geo-Congress 2019

**Observations and Findings
from Christchurch**

<https://www.youtube.com/watch?v=yNk5QhH90nA>

Ralph B. Peck Medal Lecture
Geo-Congress 2019, March 27, 2019

Prof. Misko Cubrinovski Case Histories Contributions

Primary Paper:

- Cubrinovski & Robinson (2016) "Lateral spreading: Evidence and Interpretation from the 2010–2011 Christchurch earthquakes" *SDEE*

Other Papers:


- Maurer, Green, Cubrinovski & Bradley (2016) "Evaluation of the Liquefaction Potential Index for Assessing Liquefaction Hazard in Christchurch, New Zealand," *JGGE - 2016 ASCE Norman Medal*
- Cubrinovski, Haskell, Winkley, Robinson & Wotherspoon (2014) "Performance of Bridges in Liquefied Deposits during the 2010–2011 Christchurch, New Zealand, Earthquakes," *J. Perf. Constructed Fac. - 2014 JPCF Outstanding Paper Award*
- van Ballegooy, Malan, Lacrosse, Jacka, Cubrinovski, Bray, O'Rourke, Crawford & Cowan (2014) "Assessment of Liquefaction-Induced Land Damage for Residential Christchurch," *Earthquake Spectra J. - 2014 EQ Spectra Outstanding Paper*
- Cubrinovski et al. (2018) "Liquefaction Induced Damage and CPT Characterization of the Reclamations at CentrePort, Wellington," *BSSA*



Ralph B. Peck Medal Lecture
Geo-Congress 2019, March 27, 2019

2019 Ralph B. Peck Lecture

**Observations and Findings from Christchurch
Case Histories on Soil Liquefaction**



Misko Cubrinovski, University of Canterbury, Christchurch, New Zealand



Professor
Miško
Čubrinovski

PhD
University of
Canterbury
Christchurch
New Zealand

Much over 100 keynote and invited lecture presentations

8th Ishihara Lecture:
Holistic Evaluation of
liquefaction problems.
15-07-2022

<https://www.youtube.com/watch?v=Um3zqnur6cE>



8th Ishihara Lecture

Holistic Evaluation of Liquefaction Problems



Misko Cubrinovski, University of Canterbury, Christchurch, New Zealand
Nikolaos Ntritsos, University of Canterbury, Christchurch, New Zealand

Professor
Miško
Čubrinovski
PhD
University of
Canterbury
Christchurch
New Zealand

20th Nonveiller Lecture
Engineering evaluation
of liquefaction
problems ►

